

# Installation

**Thank you for purchasing FUTURA software, a software designed especially for your FUTURA sewing machine.**

**FUTURA has been especially designed as a powerful combination of the FUTURA sewing machine and the FUTURA software.**

**The FUTURA software is the “front-end” of your sewing machine allowing you to easily transfer any kind of embroidery design to the FUTURA machine.**

**What is more, FUTURA software includes numerous editing capabilities allowing you to edit and manipulate your design before transferring it to the machine to be embroidered.**

In the pages of this manual you will learn how to get the best out of your FUTURA software & machine , for excellent sewing results.

**We hope you enjoy using FUTURA !**

## Manual structure

In order to help you easily learn how to use the software, the FUTURA software comes with **this manual**, divided into the following sections:

1. **“Getting Started/Installing the Software...” section**, which will help you install the software and understand the general concept of the product before using it.
2. **“Inside...” section**, designed to provide information and explanation on the complete (detailed) functionality of FUTURA.

## System Requirements

The following is a **list of specifications for your PC** (personal computer).

**You can install and use the software on a PC which fulfills at least this specification list.**

- > PC with PENTIUM III or faster processor
- > Windows OS: Windows 2000 / ME / XP / Vista
- > 128MB of RAM (or more recommended)
- > CD-ROM drive
- > 500 MB (or more recommended) of available hard-disk space for installation
- > Color standard (1024x768 pixel; 65,000 colors recommended) VGA adapter connected with a color VGA monitor
- > Microsoft compatible mouse
- > USB 1.1 / 2.0

## Installation of the software

In order to start using the software on your PC you would have to first install the contents of the CD to your PC. This procedure is referred to as **“installation procedure”**. **Please follow the below listed instructions in order to successfully install FUTURA on your personal computer.**

The FUTURA software comes on a CD-ROM disc. In most personal computers the default drive setting for a CD-ROM drive is “D:”

Please insert the FUTURA CD-ROM into the CD-ROM disc receiver in your PC.

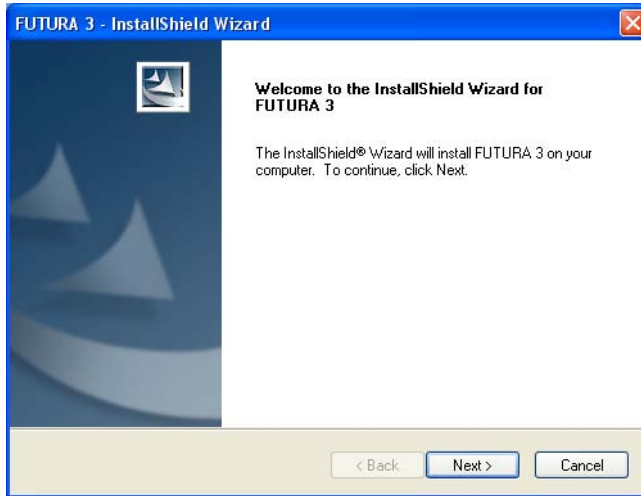


 **SINGER** | Futura.

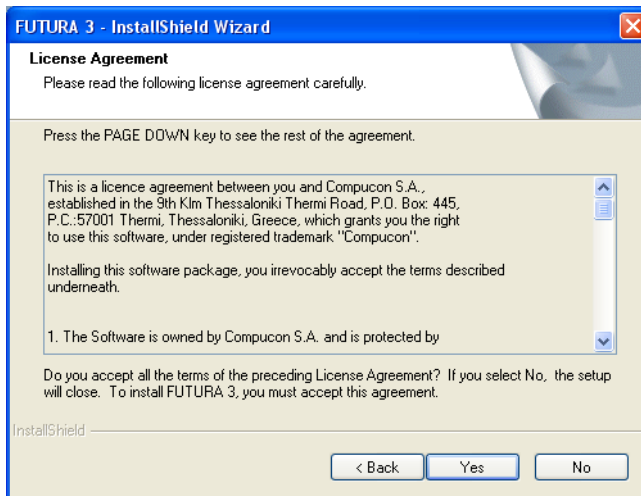
After some seconds, the Installation procedure of the software will start automatically.

In case this will not occur after a short while, you can run the installation procedure manually by going to the “Start” option of Windows, select “Run”, type “D:\FuturaStart..exe” and click on OK.

After some seconds the step by step installation of the software begins with the **Welcome window**. You can always abort the installation procedure by clicking on the **“Cancel”** button.

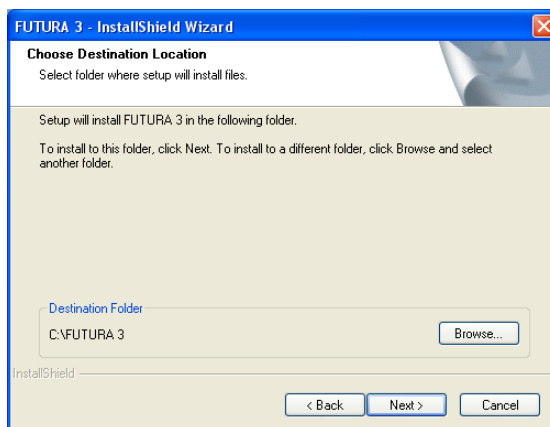


Click on “Next” to move on the next screen.



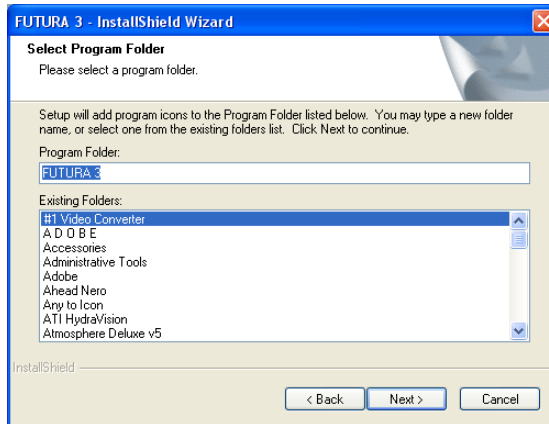
**After reading and agreeing with terms given in the License Agreement, please click on “Yes”.**

and again click on **Next**, and then select the directory where the software should be installed. **It would be recommended to use the default selected directory.**



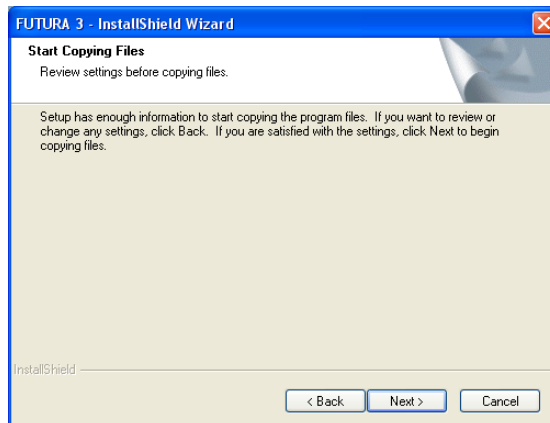
Simply click on **“Next”** to continue.

Now you are prompted to select the **Program Folder** where the shortcut for the software will be stored.



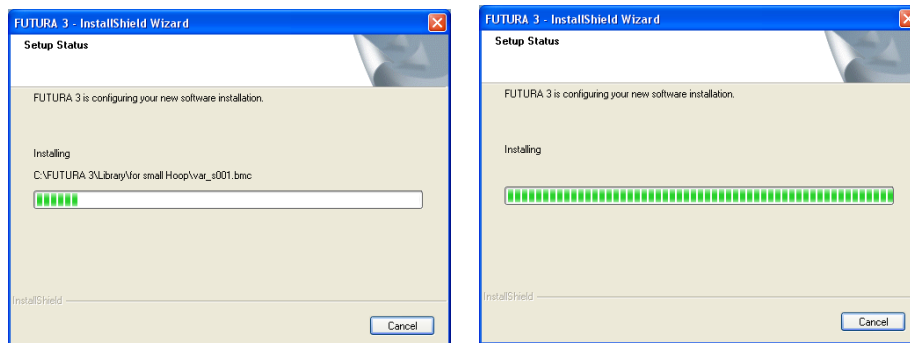
Simply click on **“Next”** to continue.

Finally you are requested to confirm all the selections made during the installation set-up.



Pressing the “**Next**” button will finally **start the copy and installation of the FUTURA software files** to the given directory on the hard disk.

A **progress bar** will indicate the stage at which the installation procedure is. It will finish when it has reached to **100%**.



The installation procedure is finalizing all required actions and will automatically close after finish. Please wait for a short while until this happens.

If the installation utility identifies a **lack of available space on your hard disk**, an **error message** will prompt you to free some hard disk space before proceeding with the installation. You can always abort the installation procedure by clicking on “**Cancel**”.



**Tip!**

Tip : If for any reason you would like to uninstall the software, select from “Start” -> “Settings” -> “Control Panel” -> “Add/Remove Programs” icon. From the appearing window scroll down until you find the FUTURA option and click on the “Add/Remove” button.



After finish of installation and when turning on the machine, Microsoft Windows might automatically prompt you to finalize the installation by installing the special USB driver for connection to the machine.

Follow the simple steps of the Microsoft “Add New Hardware” wizard in order to install the driver. When being asked where to look for the driver, simply select to look in the CD-ROM drive.

- ▶ Especially for Windows XP, the steps involved are the following :
  - After finish of installation and soon after you turn on the machine, Microsoft Windows XP will automatically prompt you to finalize the installation by installing the USB driver for the machine.



- Select "Install the software automatically" and press next.



- Please wait while windows searches for the machine driver.
- After a few seconds, the following screen will appear. Press finish in order to complete the installation of the driver.





#### Handling CD-ROMS

CD-ROMs are an excellent media for holding information.

A typical CD can hold up to 650 MB of storage space and access time is relatively fast.

*In the uncommon event that you experience any difficulty installing the program from your CD, please make sure that the CD Drive itself is in proper working order.*

*In addition, please check that the back-side of the CD (where the data is stored and no information is printed on) is perfectly clean and free from dirt, dust and greasy marks, including fingerprints.*

#### Important Note :

In order to run and use the FUTURA software, the FUTURA machine has to be set up for embroidery and also has to be connected to the PC via the serial cable that is included in the product package.

The FUTURA software will not run if machine is set up for sewing and/or is not connected to the PC.

**After finish of the installation procedure, the software will prompt if you would like to view the "Machine set-up" Tutorial, with step-by-step instructions on how to correctly setup your machine for embroidery. Select "Yes" if you would like to view the tutorial or "No" to skip.**

#### Get more at FUTURA Support Site

The [www.futura-support.com](http://www.futura-support.com) is an online support website designed to provide support to the users of the exciting FUTURA product.

To see for yourself, from inside the FUTURA software simply click on "Help" -> "Connect to Support site"