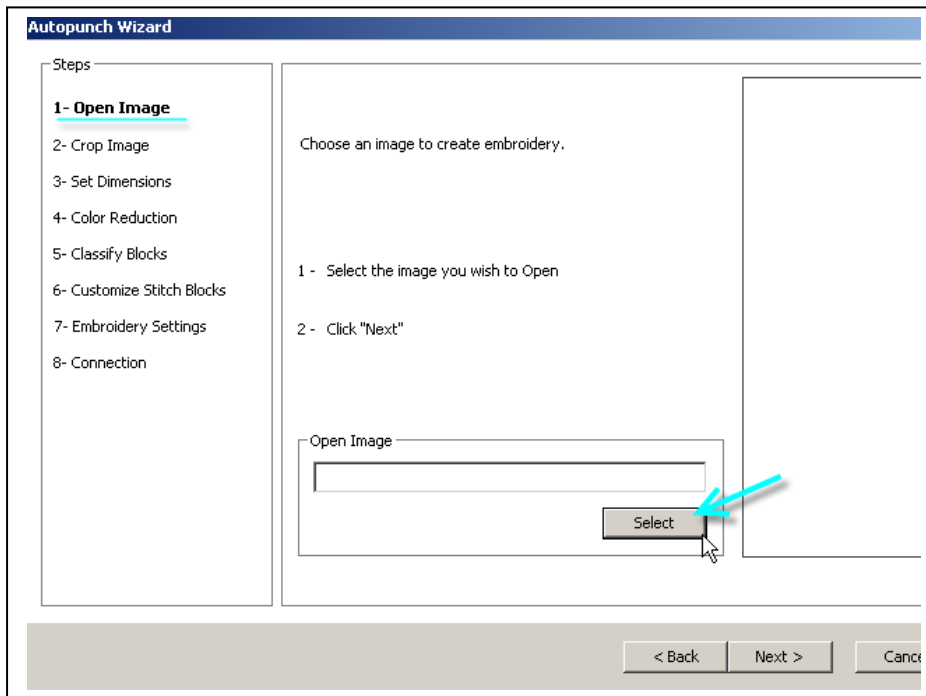




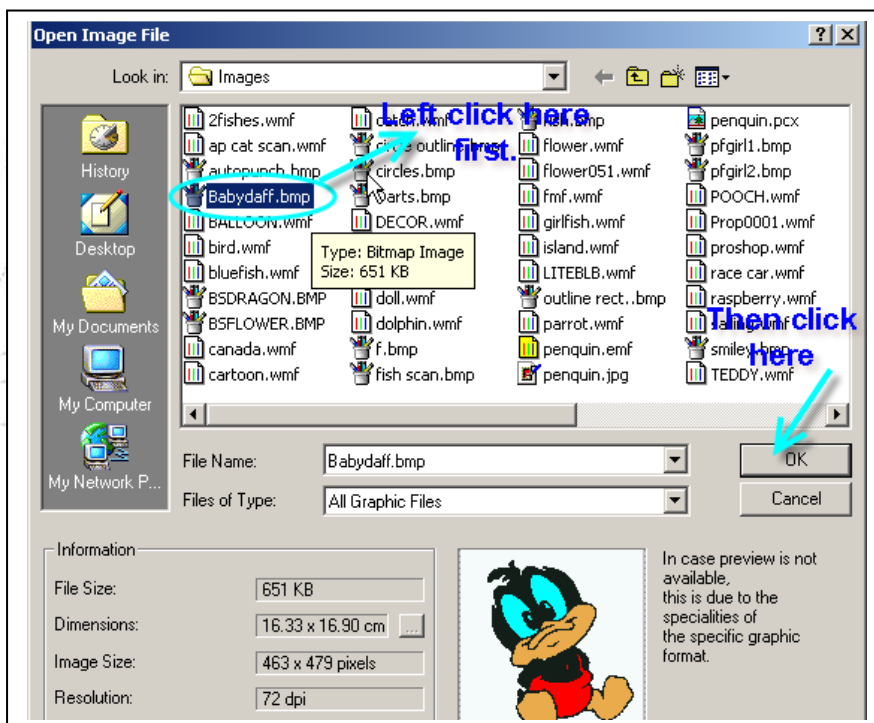
SINGER®

AutoPunch™ Wizard

Left click on Create->Autopunch->Next to start the Wizard.
In step #1 click on the SELECT button to open the image.



In the Open Image box choose the graphic you wish to create into an embroidery design.



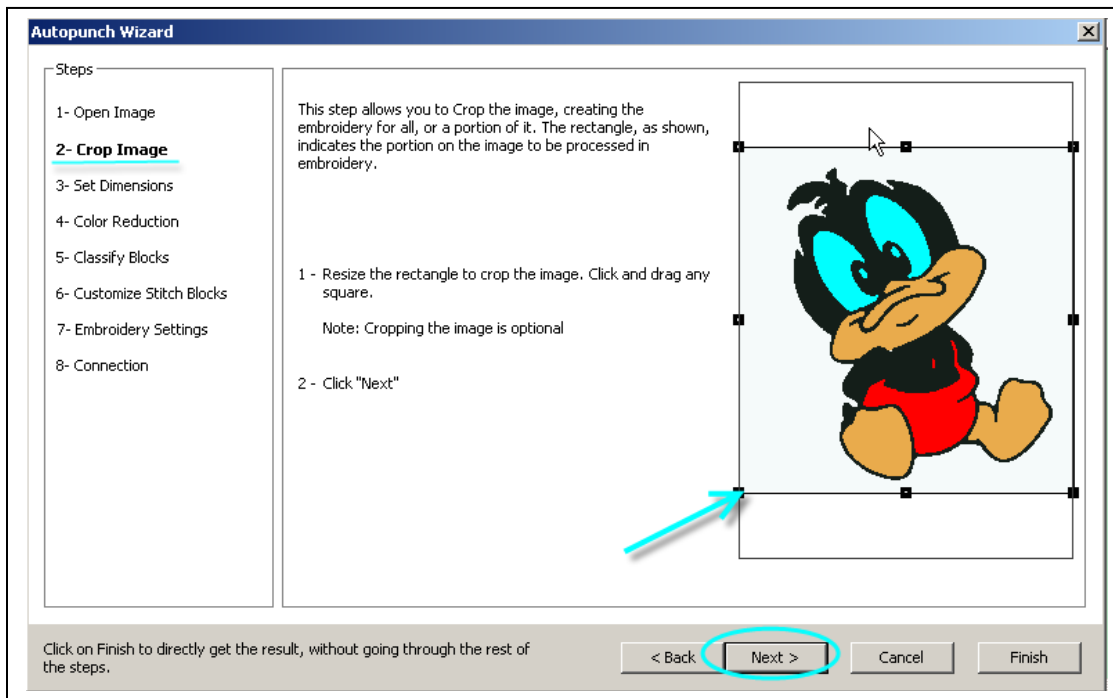


SINGER®



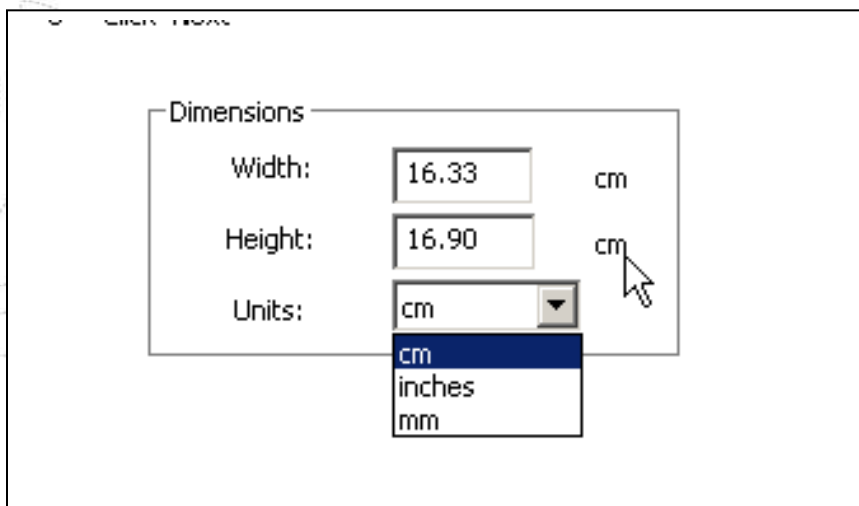
Click on NEXT when the image is on screen in the Wizard.

Step 2 you can drag the box that is around the graphic to 'Crop' the image.



Then click on NEXT.

Step 3 allows you to resize your graphic. In most cases you will want to size the graphic to the largest size that will fit into the hoop you are planning to use with the design.

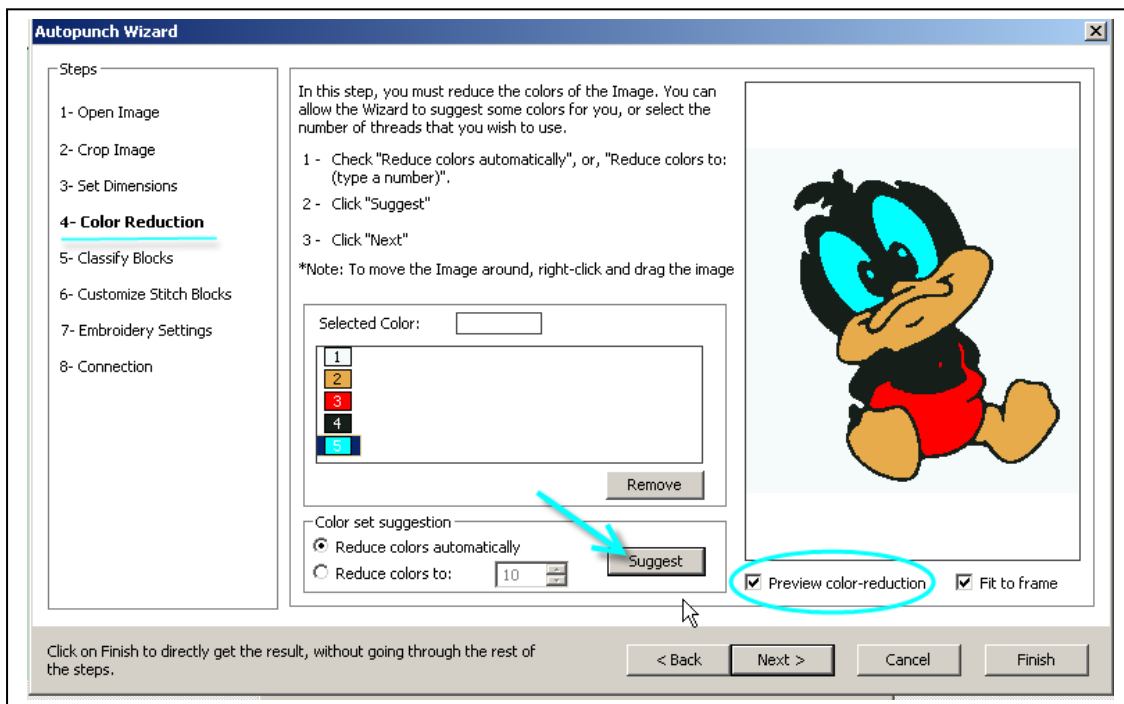




SINGER®

You can click on the Units drop down menu and change from Metric (cm) to Imperial (inches). Adjust size by typing in either the width or height. The other value will change automatically keeping the ratio.

In Step 4 the program will reduce the colors in the design, particularly on jpeg and bmp graphics. Make sure to place a check mark in the PREVIEW box.



If the Preview does not look good, then the finished product will not be acceptable. If the software has eliminated outlines and small areas it may be because they are too narrow or small to sew out properly. In general if a line is 2mm or less (which is the width of a #14 needle) it will be too narrow to sew out very well, so it will be eliminated.

You can also try reducing the colors manually instead of the default –automatic. If the software shows 5 colors try a 6 or 7 to see if the graphic improves. Or go back a step and make the artwork larger. Sometimes a design that is too large to sew in the hoop will be able to pick up details in the pattern.

Each graphic will be different depending on the size, number of colors and quality of the artwork. This is a critical step. If the artwork can't be made acceptable at this step, another graphic should be considered.

Now click NEXT.

On Step 5 the software determines how the color blocks will be filled. You can adjust the minimum and maximums for Complex Fill (one stitch direction in a block) and Branches (multiple

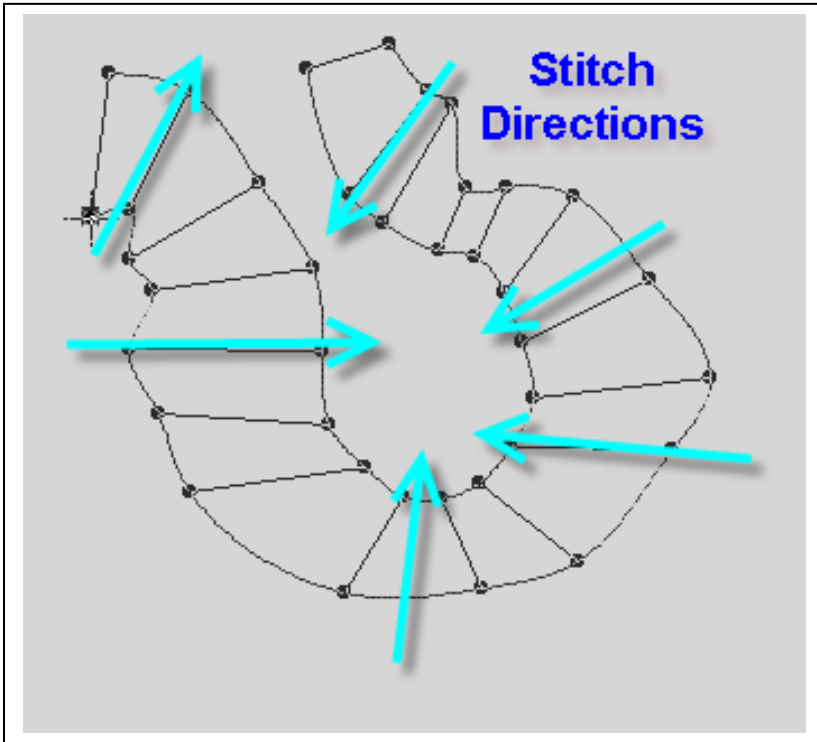


SINGER®



stitch directions- follows the contour). The Default is 9 mm, for those of us that are comfortable with metric measurements; this is equivalent to 3/8 of an inch in Imperial measurements.

Branches –or everything below 9mm would fill like below:



Above 9mm will have only one stitch direction. You can adjust this setting.

Autopunch Wizard

Steps

- 1- Open Image
- 2- Crop Image
- 3- Set Dimensions
- 4- Color Reduction
- 5- Classify Blocks**
- 6- Customize Stitch Blocks
- 7- Embroidery Settings
- 8- Connection

This step establishes how each block of the Image is handled. The Width of the shape will determine whether it will become a Fill or a Column.

Branches

1 - Move the slider bar to increase or decrease the (proposed) maximum width if a Column.

* Note: The 9 mm default is acceptable for most designs.

2 - Click "Next".

Narrow Wide 9.0 mm

Complex Fill- one stitch direction

Less than 9.0 mm

More than 9.0 mm

Click on Finish to directly get the result, without going through the rest of the steps.

< Back Next > Cancel Finish



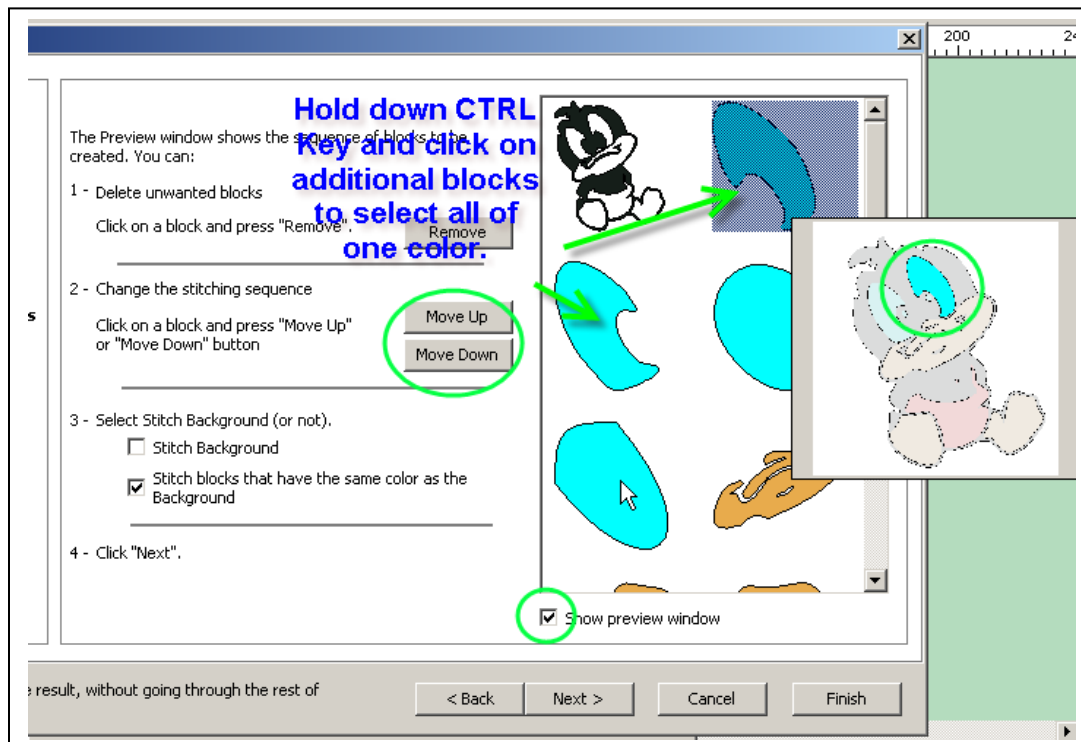


SINGER®

Then click NEXT.

Step 6 - Customize Stitch Blocks

Decide the sewing order of the color blocks for the design. The color blocks of the same color can be re-ordered to sew out with the least amount of jump stitches. You can also move entire sections (color blocks) to change the sewing order. In most cases you would sew background first and then the next layers (back to front).



When selecting a color block it will appear in the Preview box (make sure to have Show Preview selected). This will aid in determining sections of the design, to help decide sewing order within a color.

Select a section and then hold down the Control Key on the keyboard and left click on additional colors of the same block. This will highlight more than one block at a time. In this example select all of the blue, then choose the Move Up or Move Down button to change the sew-out sequence.

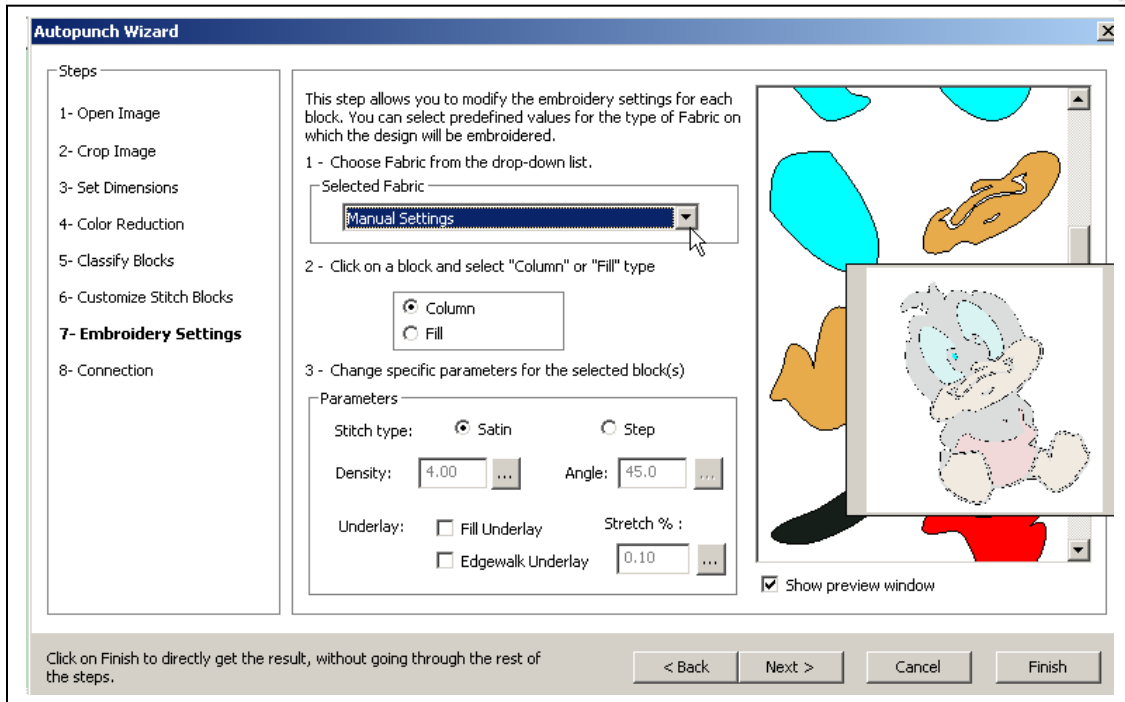
Select the Stitch Background option if desired.

Then click Next to choose Embroidery Settings.

Step 7 Embroidery Settings is used to decide the fill type, stitch direction, density and other properties of a color block or the entire group of color blocks. Use the same highlight ability as previous step to change the setting for an entire group at once or only highlight a single block at a time.



SINGER®



In Manual Setting Mode you can decide the Fill type (#2), under Parameters (#3), you can choose to have the area filled in SATIN or STEP as well as the Density and Angle (Angle only for FILL areas) Density is the distance between the stitches so a lower number will give more coverage. You can also select to have underlay added. Underlay is useful when embroidering on dark colors with light thread or for coverage on loopy or napped fabric. The Stretch % is to compensate for the stitches pulling away from each other which can result in gaps between the color blocks.

In most cases it will be easiest to select the entire group of color blocks at once, then set the fill parameters to be all the same at a single time. This will make the design more uniform.

If you are not comfortable with choosing the Embroidery Settings yourself you can choose to let the software automatically select the parameters for you by selecting PRESET FABRICS instead of MANUAL SETTINGS. Just select a fabric type from a category.

Step 8 is where you decide how to connect between blocks. In most cases you will leave this at the default of Jump. Running Stitch could sew over previously filled areas.